

# PPL Renewable Energy | Macy's at Jersey City, N.J.

PPL Renewable Energy designed, constructed, owns and operates a 390-kilowatt photovoltaic (solar) system that converts the energy from sunlight into electricity for Macy's, a department store at the Newport Centre Mall in Jersey City, N.J.

The solar system will produce about 420,000 kilowatt hours per year, allowing Macy's to use renewable energy to meet about 15 percent of its peak energy needs. That is enough electricity to power 120 homes.

This solar system will reduce annual greenhouse gas emissions by 660,000 pounds of carbon dioxide by avoiding the use of fossil fuels.

The reduction of greenhouse gas emissions is equivalent to these annual environmental benefits:

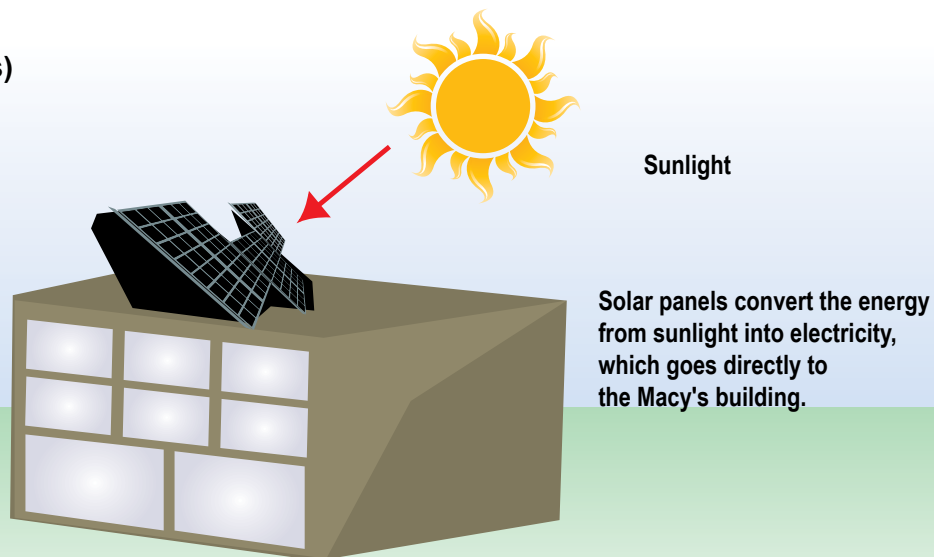
- Removing 55 cars from the road.
- Not consuming 34,000 million gallons of gasoline.
- Reducing the import of 700 barrels of oil.
- Not using 12,500 propane cylinders for home barbecues.

PPL worked with both Macy's and New Jersey's Clean Energy Program to develop this project.



<b>Location:</b>	<b>Newport Centre Mall — Jersey City, N.J.</b>
<b>Operational:</b>	<b>November 2006</b>
<b>Equipment:</b>	<b>Solar panels</b>
<b>Capacity:</b>	<b>390 KW</b>
<b>Input:</b>	<b>Sunlight</b>
<b>Output:</b>	<b>Daytime, peaking power</b>

## Photovoltaic (solar panels)



PPL Renewable Energy  
Two North Ninth Street  
Allentown, PA 18101-1179  
Tel. 610-774-6866  
[www.pplrenewableenergy.com](http://www.pplrenewableenergy.com)

