

PPL Renewable Energy | Macy's at Jersey City, N.J.

PPL Renewable Energy designed, constructed, owns and operates a 390-kilowatt photovoltaic (solar) system that converts the energy from sunlight into electricity for Macy's, a department store at the Newport Centre Mall in Jersey City, N.J.

The solar system will produce about 420,000 kilowatt hours per year, allowing Macy's to use renewable energy to meet about 15 percent of its peak energy needs. That is enough electricity to power 120 homes.

This solar system will reduce annual greenhouse gas emissions by 660,000 pounds of carbon dioxide by avoiding the use of fossil fuels.

The reduction of greenhouse gas emissions is equivalent to any one of these annual environmental benefits:

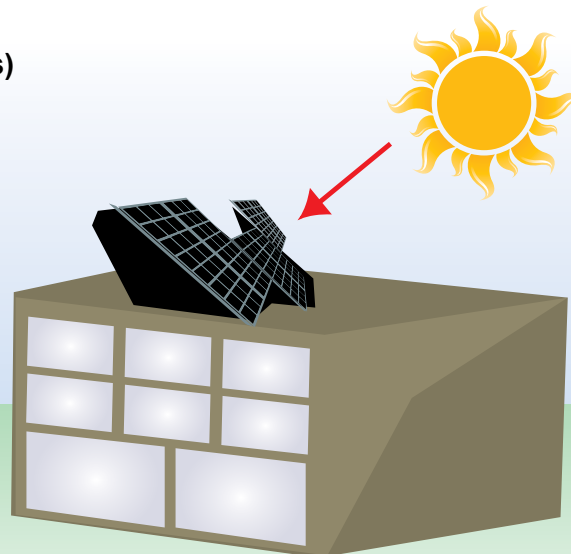
- Removing 55 cars from the road.
- Not consuming 34,000 gallons of gasoline.
- Reducing the import of 700 barrels of oil.
- Not using 12,500 propane cylinders for home barbecues.

PPL worked with both Macy's and New Jersey's Clean Energy Program to develop this project.



Location:	Newport Centre Mall — Jersey City, N.J.
Operational:	November 2006
Equipment:	Solar panels
Capacity:	390 KW
Input:	Sunlight
Output:	Daytime, peaking power

Photovoltaic (solar panels)



Sunlight

Solar panels convert the energy from sunlight into electricity, which goes directly to the Macy's building.



PPL Renewable Energy
Two North Ninth Street
Allentown, PA 18101-1179
Tel. 610-774-6866
www.pplrenewableenergy.com

